



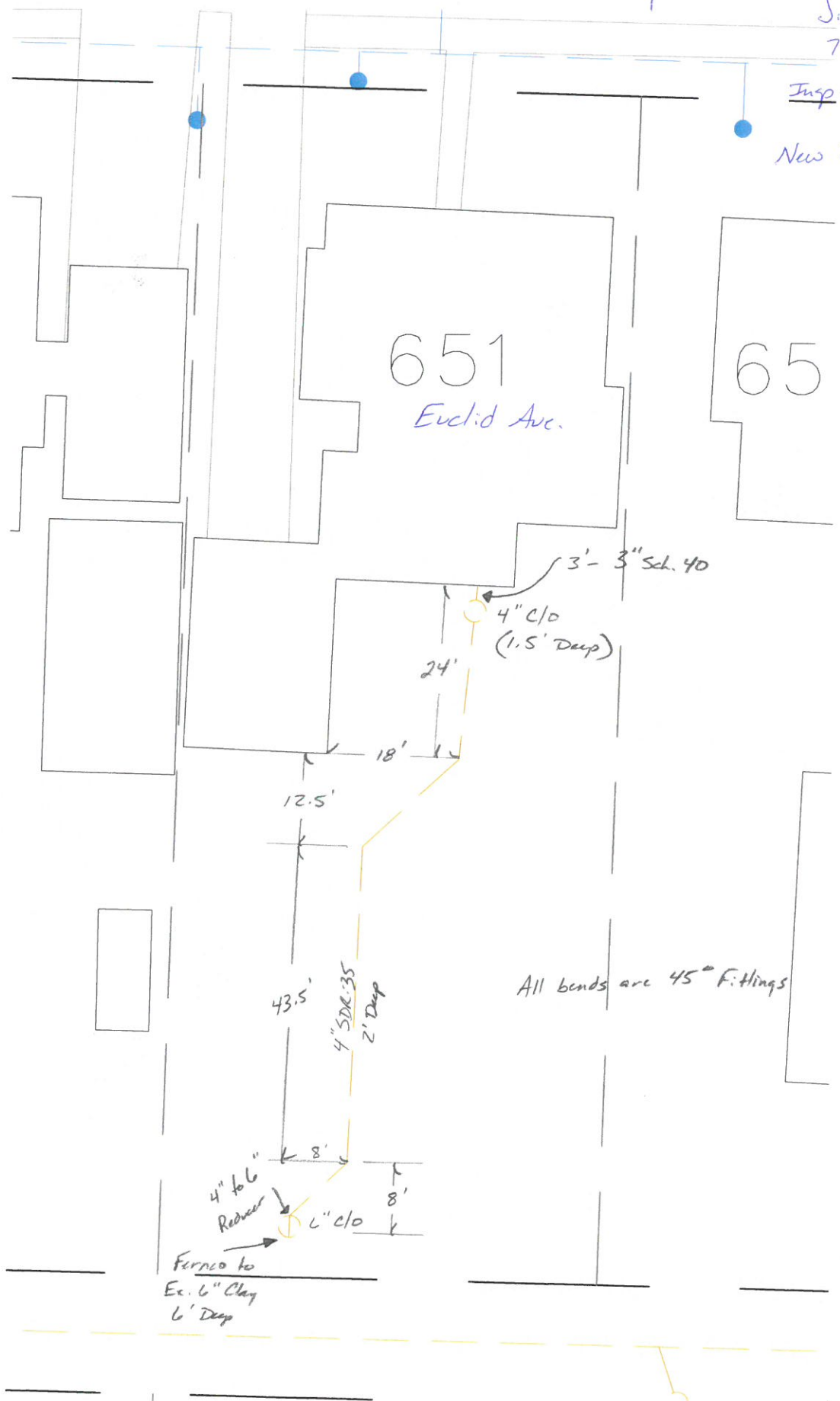
1"=20'

J. A. Hillis

7-25-19

Insp. By: A. Debl

New Sanitary Service



651
Euclid Ave.

65

3'- 3" sch. 40

4" c/o
(1.5' Deep)

24'

18'

12.5'

43.5'

4" SDR 35
2' Deep

All bends are 45° Fittings

4" to 6"
Reducer

8'

6" c/o

Furned to
Ex. 6" Clay
6' Deep

8'